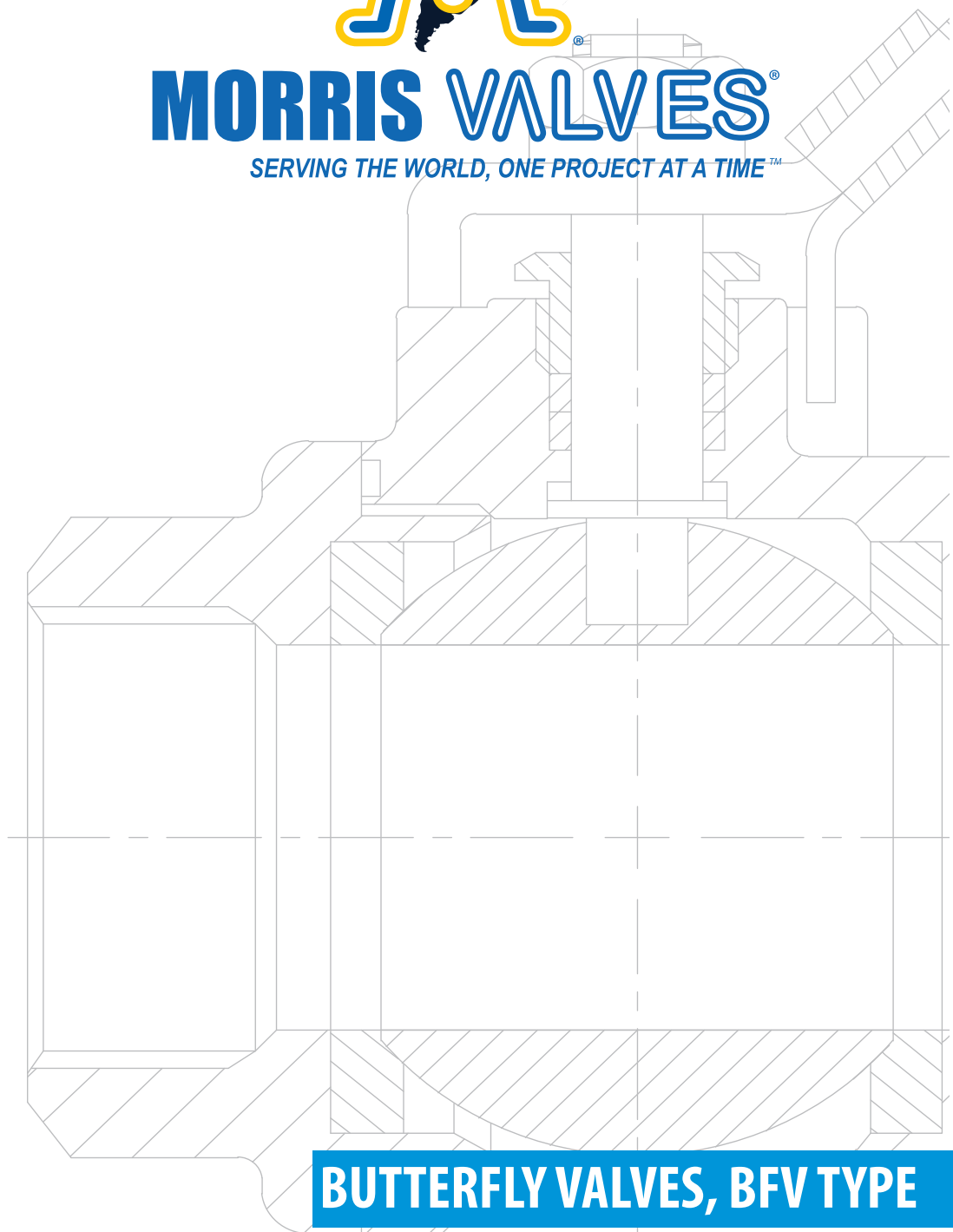




MORRIS VALVES®

SERVING THE WORLD, ONE PROJECT AT A TIME™



BUTTERFLY VALVES, BFV TYPE

www.morrisvalve.com



In 1984, our journey into the business of repairing valves and industrial instrumentation began. That journey has led us to represent and service well known American brands and companies. In early 2000, our experience and growing passion for the valve industry encouraged our decision to launch our own brand, Morris Valves. Starting with the highly requested Ball Valves, the brand has been based on the principal of quality and performance to match our customers' needs. Our high standards of production later lead us to incorporate other models such as Gate Valve and Check Valves to our production. These additions were carefully selected to match our Standard of Quality. Our success has been driven by our belief of "Tradition with Quality" in everything we do. Our products are developed with that belief which drives our growth and guides the service we provide to our customers.

Mision

Our mission is to use our highly trained, highly focused, and extremely motivated staff to work with manufacturers who value quality and have the vision for new development and product applications to ensure the timely provision of goods and services related to valves, their components and industrial equipment in general. We maintain a rigorous standard of customer satisfaction, which will provide for the welfare of the company, the welfare of the countries we serve, and most importantly the sustainability of the planet.

Contacts

Address: 6803 Theall Rd Building B, Houston, Tx 77066

Telephone: +1 (832) 666-5576

Cel: +1 (786) 779-7469

Email: sales@morrisvalve.com



Vision

Our vision is to be amongst the leading corporations in the supply of goods and services related to valves, their components and industrial equipment in general. We want to conquer new markets in conformity with international standards and remain committed to customer satisfaction, the welfare of our company and the sustainability our planet.

"Serving the world, one project at a time"

Usually used to cut off flow in piping systems. widely applied in the field of:

- * Potable water,
- * Water supply and drainage,
- * Sewage disposal,
- * Irrigation
- * Air conditioning
- * Fire Protection
- * Chemical &
- * Energy Industry

A. Design:

- Designed to comply with MSS SP-67, EN 593, API 609-
- * Meets ASME B16.1 & ASME B16.5 Flanges
- * Wafer and Lugged Body Design, Face to face dimensions according to EN 558 Series 20 and API 609

B. Features:

-Materials:

- Body:

- * Ductile Iron (ASTM A536, 65-45-12) for high strength and good corrosion resistance.

- Disc:

- * Ductile Iron nickel or nylon 11 coated.

- * 304 SST, 316 SST,

- * Al-bronze,

- Seats: EPDM, Buna - N, Neoprene, Viton®, NBR, PTFE, makes it suitable for different applications.



BUTTERFLY VALVE,
RESILENT SEATED,CENTERLINE

BFV-RSCL TYPE

Seat Temperature Ratings

Material	Temperature Ratings (° F)
Buna - N	+ 10 to 180
Abrasive Resistant Buna - N	+ 10 to 180
Neoprene	+ 20 to 200
EPDM (2 - 16)"	- 30 to 275
EPDM (18 - above)"	- 30 to 225
EPDM Food Grade (2 -12)"	- 30 to 225
Viton®	+ 10 to 275
Viton® Hi Temperature	+ 10 to 400
PTFE (2 - 12)"	+ 40 to 250

-Coatings

- * Fusion bonded Epoxy Coating.

- Bubble tight" shut off.

- Bi-Directional

- * To 200 Psi (2 - 12)"

- * To 150 psi (14 - 30)"

- Short space between flanges for the Installation.

- Actuator.

- * Lever handle, Gear box and hand wheel, Electric Actuators, Pneumatic actuators.

- Accessories.

- * Local Position Indicator.

- * On-OFF Limit Switches.

- ISO 5211 square drive shaft for easy automation.

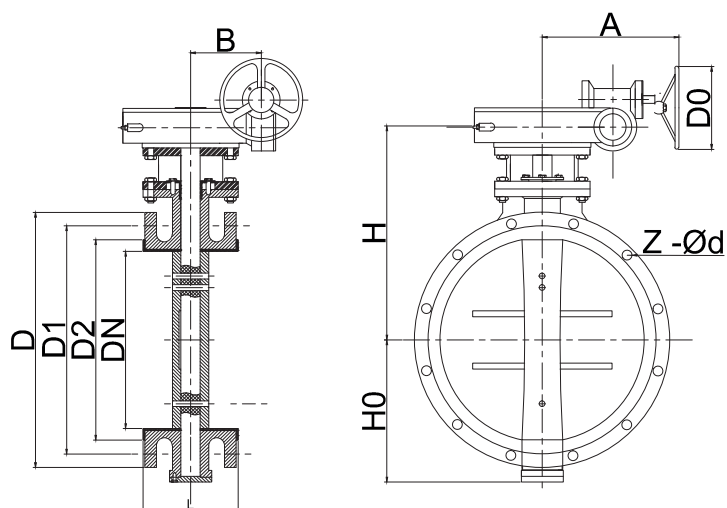
- * Commercial cleaning available for Oxygen level 2.

- * CE/PED Certification, Per En 10204-3.1 available for all the Sizes.

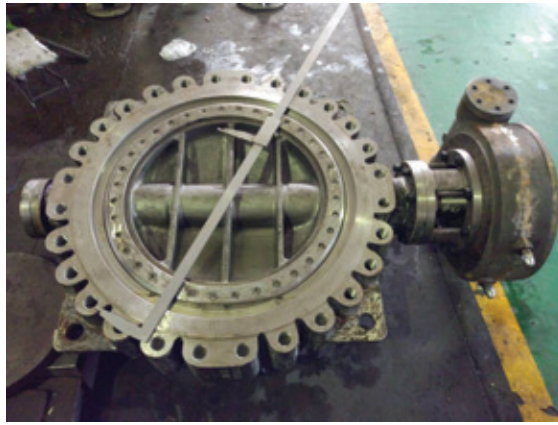
SIZE:

NPS (2 – 56")





FLANGED TYPE									WAFER TYPE / LUG TYPE		
NPS (in)	DN	L	H0	H	A	B	D0	Wt. Est.(Kg)	L	Wt. Est.(Kg)	Wt. Est.(Kg)
2	50	108	80	190	180	50	150	15	43	4	5.5
3	80	114	96	210	180	50	150	21	46	6	10
4	100	127	115	230	180	50	150	27	52	8	11.5
6	150	140	140	260	185	63	305	60	56	13	17
8	200	152	175	290	185	63	305	85	60	28	30
10	250	165	202	330	215	80	305	110	68	40	36
12	300	178	242	370	215	80	406	142	78	54	67
14	350	190	266	400	215	80	406	200	78	70	100
16	400	216	298	440	245	125	300	210	102	111	151
18	450	222	315	460	245	125	300	240	114	136	172
20	500	229	345	480	245	125	300	275	127	193	257
24	600	267	400	540	390	242	400	350	154	304	368
28	700	292	520	610	390	242	500	620	165	340	640
32	800	318	591	660	420	262	400	750	190	480	760
36	900	330	660	730	420	262	400	985	203	590	975
40	1000	410	670	780	550	325	500	1250	216	770	1250
48	1200	470	780	880	550	325	500	1885	254	1030	1765
56	1400	530	990	980	600	362	500	2760	279	1540	2760





A Tradition of Quality

*Our passion is to develop
solutions for difficult situations in
Industrial Applications, no matter
how large or small the project.*

"Serving the world, one project at a time"

