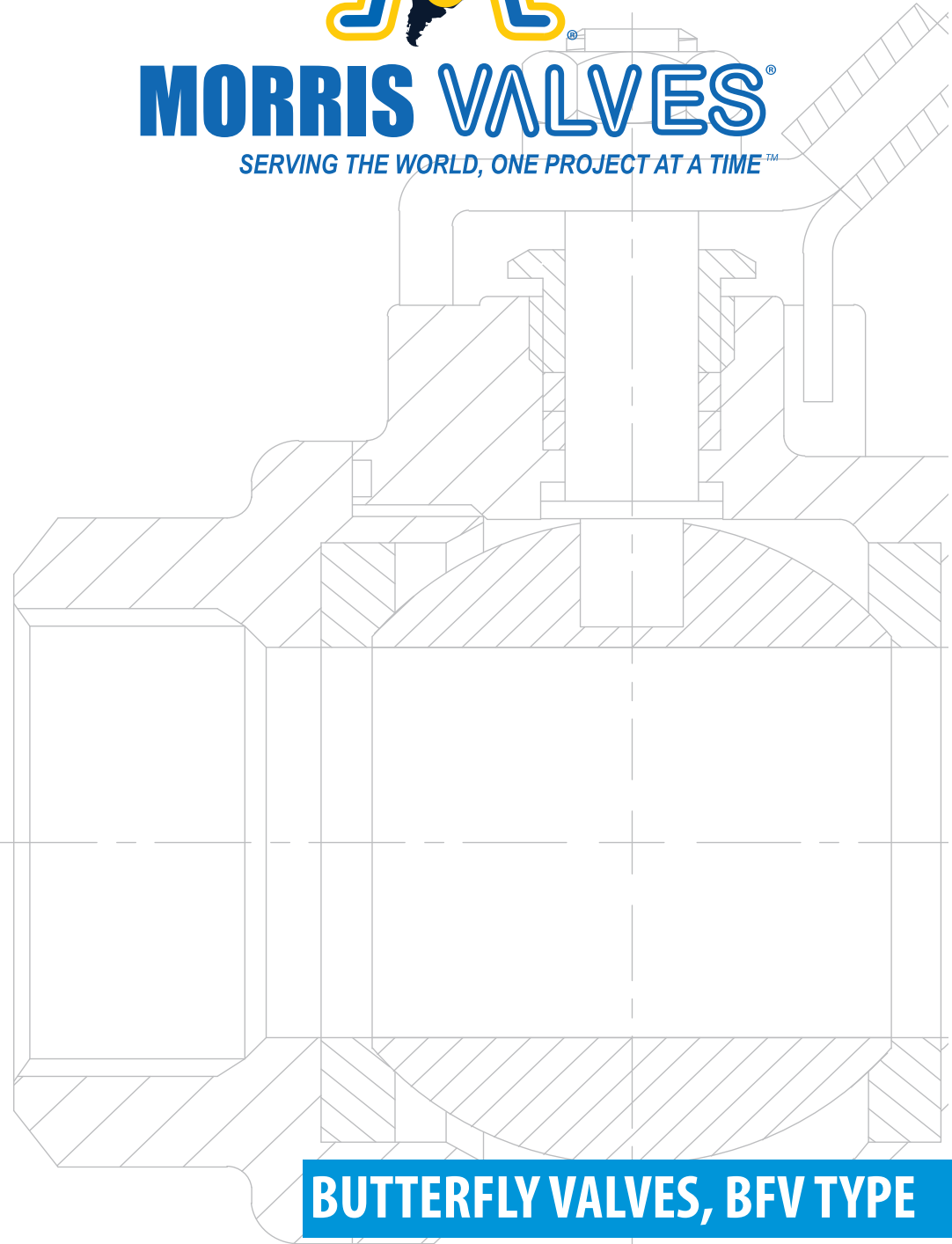




MORRIS VALVES®

SERVING THE WORLD, ONE PROJECT AT A TIME™



BUTTERFLY VALVES, BFV TYPE

www.morrisvalve.com



In 1984, our journey into the business of repairing valves and industrial instrumentation began. That journey has led us to represent and service well known American brands and companies. In early 2000, our experience and growing passion for the valve industry encouraged our decision to launch our own brand, Morris Valves. Starting with the highly requested Ball Valves, the brand has been based on the principal of quality and performance to match our customers' needs. Our high standards of production later lead us to incorporate other models such as Gate Valve and Check Valves to our production. These additions were carefully selected to match our Standard of Quality. Our success has been driven by our belief of "Tradition with Quality" in everything we do. Our products are developed with that belief which drives our growth and guides the service we provide to our customers.

Our vision is to be amongst the leading corporations in the supply of goods and services related to valves, their components and industrial equipment in general. We want to conquer new markets in conformity with international standards and remain committed to customer satisfaction, the welfare of our company and the sustainability our planet.

Mision

Our mission is to use our highly trained, highly focused, and extremely motivated staff to work with manufacturers who value quality and have the vision for new development and product applications to ensure the timely provision of goods and services related to valves, their components and industrial equipment in general. We maintain a rigorous standard of customer satisfaction, which will provide for the welfare of the company, the welfare of the countries we serve, and most importantly the sustainability of the planet.

Contacts

Address: 6803 Theall Rd Building B, Houston, Tx 77066
Telephone: +1 (832) 666-5576
Cel: +1 (786) 779-7469
Email: sales@morrisvalve.com



Vision

"Serving the world, one project at a time"

BFV-TEXC TYPE



CE APPROVED

SIZE:
NPS (3 – 64")

A. Design & Manufacture to Meet with:

a. API 609(Category B), ASME B16.34, Flanged, Wafer & Lugged Body.

Flanges meets with:

1. Wafer & Wafer Lugged:
 - * Face to face: API 609.
 - * End Flange Dimensions: ASME B16.5 & ASME B16.47.
2. Flanged:
 - * Face to face: API 609/ ISO 5752 Ser. 13/ Ser. 14/ Ser. 8
 - * Test: API 598.

EN 593, Flanged, Wafer and Lugged Body.

- * Flanges meets with EN 1092.
- * Face to face dimension: EN 558.
- * Test: EN 12266-1

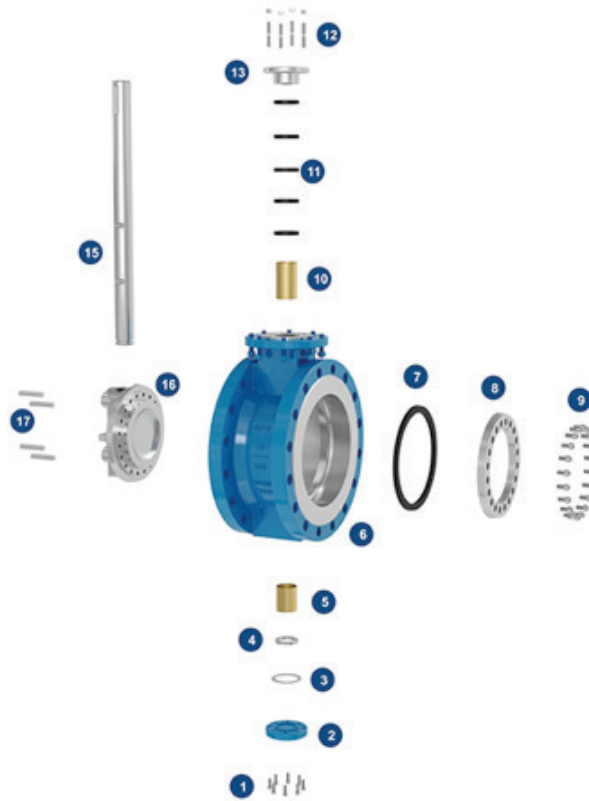
B. Features:

- Achieve tight shut-off, zero leakage at temperatures as low as – 29 to 250 °C.
 - * Laminated seat valve: Zero leakage sealing in bi-directional (As per DIN class I or ANSI Class VI).
 - * Integral seat valve: Bi-directional tight sealing (As per ANSI Class V).
- Triple Offset valves incorporate 3-way eccentricity. The metal seat is capable of very tight shut off at Temperatures up to +600°C.
- Excellent isolation function for gas and liquid.
- Takes up little space between flanges for its installation.
- Applicable to harsh working condition such as high temperature, high pressure and corrosive conditions.
- Welded stainless steel or stellite body seat, is specially designed for long service life.
- The seal ring is easy to be replaced and adjusted.
- Inherently fire safe design (Metal to Metal Seating Surface).
- Actuator.
 - * Lever handle, Gear box and hand wheel, Electric Actuators, Pneumatic actuators.
- Accessories.
 - * Local Position Indicator.
 - * On-OFF Limit Switches.
- ISO 5211 square drive shaft for easy automation.
- CE/PED Certification, Per EN 10204-3.1 available for all the Sizes.

C. Usually used to shut off flow or Isolation functions in piping systems. Widely applied in the field of:

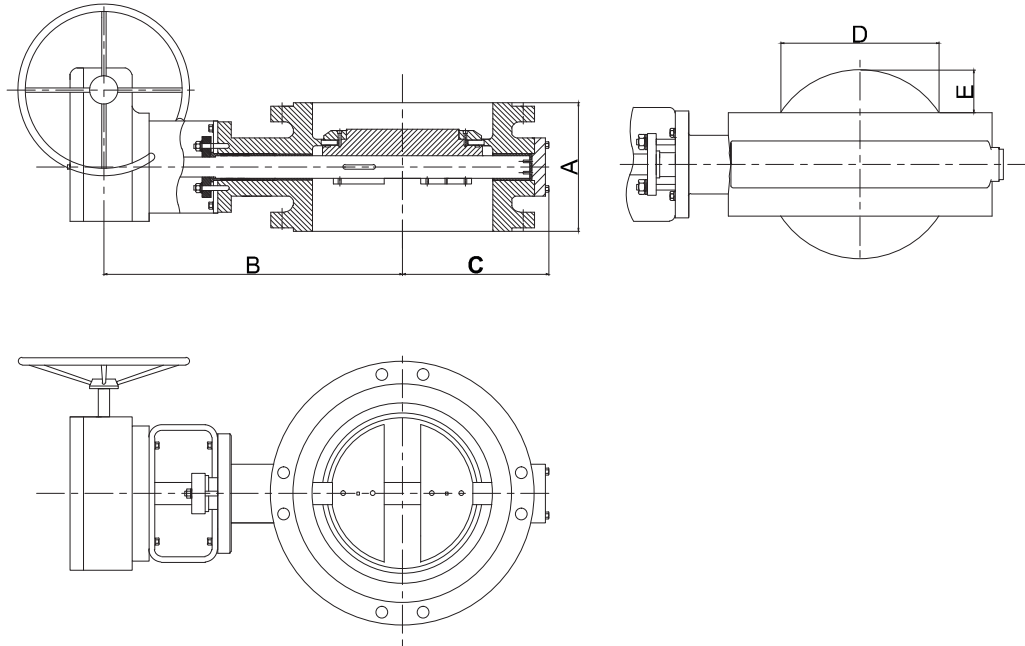
- Energy Industry (High temperature Applications).
 - * Steam Plants in Geothermal Plants.
 - * Thermo-Electric Generation Plants.
- Water supply and drainage.
- Sewage disposal.
- Industrial pipe lines with corrosive medium in:
 - * Metallurgy.
 - * Iron and Steel Plants.
 - * Petro-Chemical Industry.

D. Main Parts and Materials, Basic Configuration.



ITEM	PART NAME	CARBON STEEL	STAINLESS STEEL	LOW TEMPERATURE Steel	HIGH TEMPERATURE Steel
1	Screw for bottom cover	8.8/B7	B8	B8/L7	B8/L7
2	Bottom cover	A105	304	304/LF2	304/LF2
3	Gasket	304+Graphite	304+Graphite	304+Graphite	304+Graphite
4	Clamping ring	1035	304	304	304
5	Lower bushing	SF-1	SF-1S/C95200	SF-1S/C95200	SF-1S/C95200
6	Body	WCB	CF8	LCB/LC1	LCB/LC1
7	Sealing ring	304+Graphite	304+Graphite	304+Graphite	304+Graphite
8	Retaining ring	A105	304	304/LF2	304/LF2
9	Screws on retaining ring	8.8/B7	B8	B8/L7	B8/L7
10	Upper Bushing	SF-1	SF-1/C95200	SF-1/C95200	SF-1/C95200
11	Packing	Flexible Graphite	Flexible Graphite	Flexible Graphite	Flexible Graphite
12	Studs for gland	8.8/B7	B8	B8/L7	B8/L7
13	Packing gland	WCB	CF8	CF8/LF2	CF8/LF2
14	Yoke	WCB	WCB/CF8	WCB/CF8	WCB/CF8
15	Shaft	410/420	304/17-4PH	410/17-4PH	410/17-4PH
16	Disc	WCB	CF8	LCB/LC1	LCB/LC1
17	Pin	410/420	304/17-4PH	410/17-4PH	304/XM-19

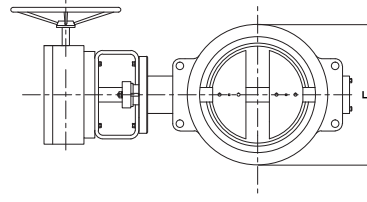
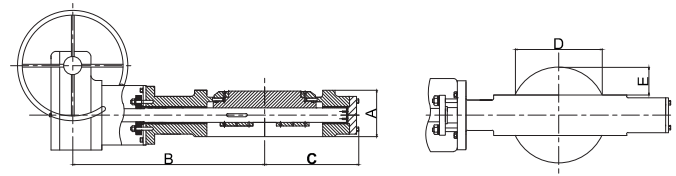
FLANGED TYPE



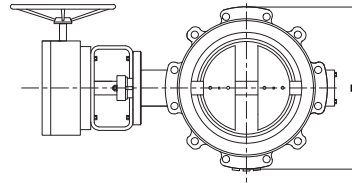
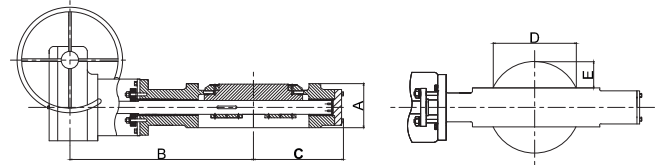
SIZE NPS (in)	CLASS 150							CLASS 300					CLASS 600					CLASS 900					CLASS 1500						
	DN	A	B	C	D	E	Wt	A	B	C	D	E	Wt	A	B	C	D	Wt	DN	A	B	C	Wt	A	B	C	Wt		
3	80	114	265	130			30	114	265	130			50	180	335	155		50											
4	100	127	275	140			35	127	275	150			70	190	372	170		60											
6	150	140	300	160	45	8	45	140	390	200			80	210	410	200		95	150	225	466	254	199	275	475	257	450		
8	200	152	415	205	128	28	65	152	455	230	125	28	125	230	490	255		230	200	275	568	305	445	325	575	307	770		
10	250	165	475	240	182	45	110	165	490	253	180	46	165	250	580	305		365	250	325	618	331	504	390	630	371	1323		
12	300	178	510	265	235	65	150	178	545	295	235	66	216	270	600	335	61	395	300	375	700	407	710	450	720	414	1628		
14	350	190	560	305	265	75	190	190	585	335	275	78	305	290	630	370	150	445	350	425	759	432	978	515	770	493	2860		
16	400	216	590	335	294	78	250	216	625	375	291	77	380	310	750	410	172	735	400	475	825	483	1354	575	830	530	3630		
18	450	222	585	360	345	100	280	222	680	405	336	105	420	330	816	455	226	910	450	500	875	534	1737	640	925	591	4730		
20	500	229	670	395	380	115	385	229	755	455	395	120	530	350	820	475	263	1435	500	575	985	585	2212	700	1015	664	5500		
24	600	267	725	475	475	145	570	267	910	530	476	150	1040	390	990	565	353	1520	600	675	1055	661	3793	765	1090	780	8448		
28	700	292	820	495	555	180	760	292	950	565	564	185	1440	470	1200	665	470	2440											
32	800	318	1000	640	677	224	860	318	1082	665	655	211	1720																
34	850	330	1025	650	706	235	1060	330	1130	695	699	235	1960																
36	900	330	1030	675	740	250	1100	330	1192	745	699	235	2035																
38	950	410	1055	690	752	238	1240	410	1120	715	762	235	2460																
40	1000	410	1145	745	783	250	1657	410	1140	735	815	261	2750																
42	1050	410	1200	795	867	285	1871	410	1220	775	868	290	3275																
48	1200	470	1385	905	980	320	2858	470	1405	885	994	335	5100																
54	1350	530	1365	950	1110	369	3800																						
60	1500	600	1450	1040	1240	402	4600																						
64	1600	600	1700	1150	1271	416	6080																						

All dimensions in mm and weights in kg
 Class 600 - Face-to-face dimensions above 24" are manufacturer's standard.
 Class 900 - Face-to-face dimensions are as per ISO 5752 Ser. 8
 Class 1500 - Face-to-face dimensions are as per manufacturer's standard.

WAFER TYPE



LUG TYPE



SIZE		CLASS	A	B	C	D	E	WAFER		LUG	
NPS (in)	DN							J	Wt (Kg)	J	Wt (Kg)
3	80	150	48	265	130	75	18	127	25	190	30
		300	48	265	130	71	18	127	31	210	40
		600	54	335	155	71	15	127	35	210	48
4	100	150	54	270	140	99	27	158	31	230	35
		300	54	267	148	94	27	158	60	255	71
		600	64	372	170	94	16	158	44	275	60
6	150	150	57	300	160	151	52	216	40	280	45
		300	59	350	195	143	52	216	58	320	76
		600	78	410	182	143	30	216	70	355	95
8	200	150	64	325	190	197	70	270	58	345	65
		300	73	423	222	188	70	270	97	380	126
		600	102	490	255	183	41	270	147	420	200
10	250	150	71	470	240	249	85	324	98	405	110
		300	83	435	250	242	85	324	120	445	156
		600	117	580	305	231	64	324	268	510	365
12	300	150	81	460	260	299	110	381	134	485	150
		300	92	535	295	292	110	381	166	520	216
		600	140	600	335	275	64	381	300	560	408
14	350	150	92	560	305	331	147	413	170	535	190
		300	117	610	330	324	147	413	235	585	305
		600	155	630	370	302	85	413	313	605	425
16	400	150	102	560	345	381	153	470	223	595	250
		300	133	642	370	375	153	470	292	650	380
		600	178	750	410	348	89	470	603	685	820
18	450	150	114	586	360	432	165	534	250	635	280
		300	149	690	400	422	165	534	323	710	420
		600	200	816	455	392	101	534	669	745	910
20	500	150	127	700	390	483	157	585	344	700	385
		300	159	755	450	472	157	585	408	775	530
		600	216	820	475	437	113	585	809	815	1100
24	600	150	154	725	455	578	220	693	491	815	550
		300	181	925	530	562	220	693	785	915	1020
		600	232	990	565	519	132	693	1118	940	1520





A Tradition of Quality

*Our passion is to develop
solutions for difficult situations in
Industrial Applications, no matter
how large or small the project.*

"Serving the world, one project at a time"

