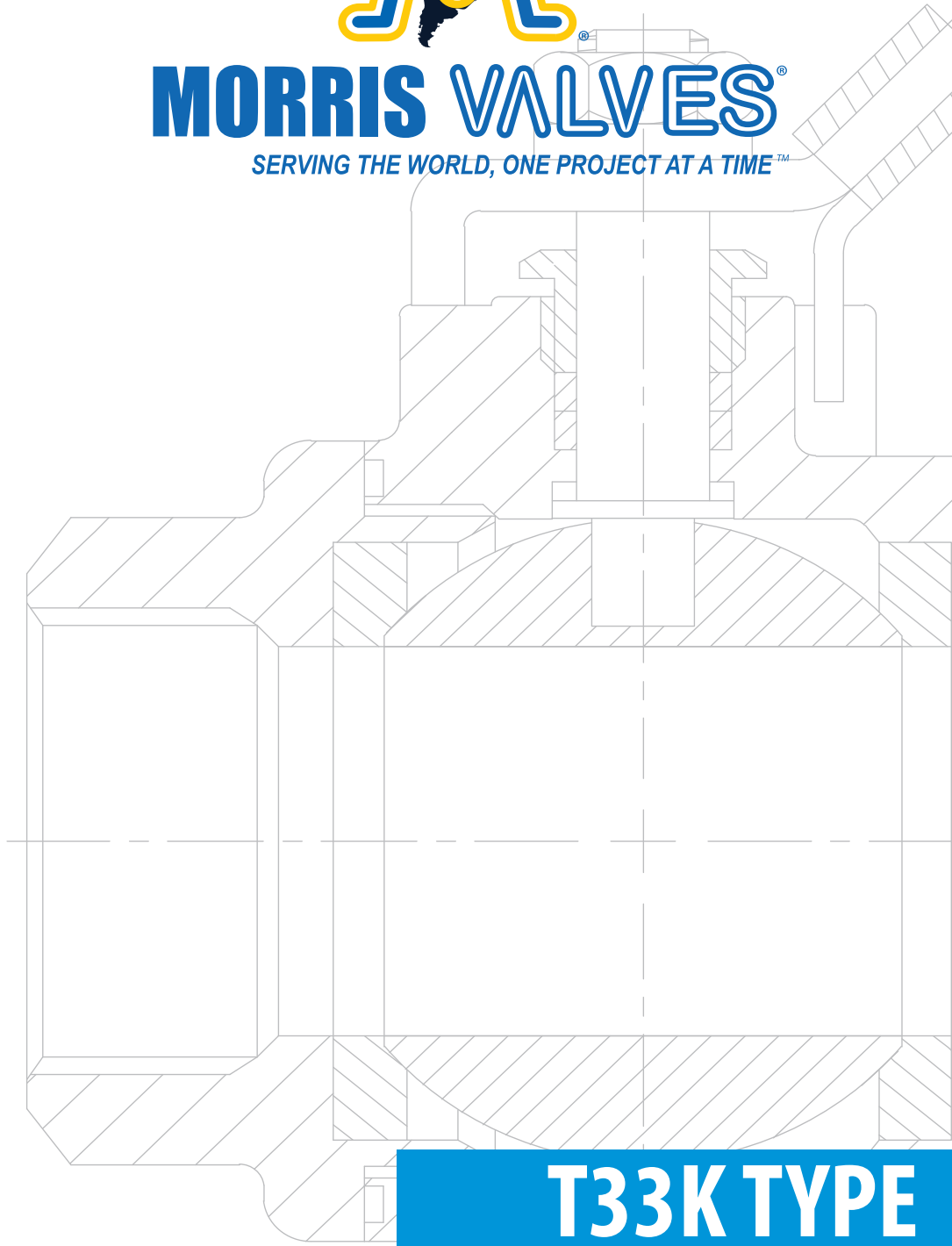




**MORRIS VALVES®**

SERVING THE WORLD, ONE PROJECT AT A TIME™



**T33K TYPE**

[www.morrisvalve.com](http://www.morrisvalve.com)



In 1984, our journey into the business of repairing valves and industrial instrumentation began. That journey has led us to represent and service well known American brands and companies. In early 2000, our experience and growing passion for the valve industry encouraged our decision to launch our own brand, Morris Valves. Starting with the highly requested Ball Valves, the brand has been based on the principal of quality and performance to match our customers' needs. Our high standards of production later lead us to incorporate other models such as Gate Valve and Check Valves to our production. These additions were carefully selected to match our Standard of Quality. Our success has been driven by our belief of "Tradition with Quality" in everything we do. Our products are developed with that belief which drives our growth and guides the service we provide to our customers.

Our vision is to be amongst the leading corporations in the supply of goods and services related to valves, their components and industrial equipment in general. We want to conquer new markets in conformity with international standards and remain committed to customer satisfaction, the welfare of our company and the sustainability of our planet.

## Mission

Our mission is to use our highly trained, highly focused, and extremely motivated staff to work with manufacturers who value quality and have the vision for new development and product applications to ensure the timely provision of goods and services related to valves, their components and industrial equipment in general. We maintain a rigorous standard of customer satisfaction, which will provide for the welfare of the company, the welfare of the countries we serve, and most importantly the sustainability of the planet.

## Contacts

**Address:** 6803 Theall Rd Building B, Houston, Tx 77066

**Telephone:** +1 (832) 666-5576

**Cel:** +1 (832) 983-0744

**Email:** sales@morrisvalve.com



## Vission

*"Serving the world, one project at a time"*

# United States of America

United States Patent and Trademark Office

## MORRIS VALVES

**Reg. No. 4,241,184**

MORRIS VALVES, INC. (FLORIDA CORPORATION)  
5590 NW 84TH AVENUE

**Registered Nov. 13, 2012**

MIAMI, FL 33166

**Int. Cl.: 7**

FOR: VALVES BEING PARTS OF MACHINES, NAMELY, BALL VALVES, NEEDLE VALVES,  
AND MANIFOLD VALVES, IN CLASS 7 (U.S. CLS. 13, 19, 21, 23, 31, 34 AND 35).

**TRADEMARK**

FIRST USE 0-0-2010; IN COMMERCE 0-0-2010.

**PRINCIPAL REGISTER**

THE MARK CONSISTS OF STANDARD CHARACTERS WITHOUT CLAIM TO ANY PAR-  
TICULAR FONT, STYLE, SIZE, OR COLOR.

NO CLAIM IS MADE TO THE EXCLUSIVE RIGHT TO USE "VALVES", APART FROM THE  
MARK AS SHOWN.

SER. NO. 85-560,535, FILED 3-5-2012.

SUSAN BILLHEIMER, EXAMINING ATTORNEY



*David J. Kybas*

Director of the United States Patent and Trademark Office

# T33K TYPE

**INVESTMENT CASTING BODY & CAP**  
 ASTM A 351 - CF8M, A 350  
 LF2, A216 - WCB

**FEATURES:**

- TREAD CONSTRUCTIONS ENABLES COMBINATION OF END CONNECTIONS
- PIPE THREAD IN ACCORDANCE WITH:
  - \* ANSI B2.1 (BASIC STD FOR STEEL PIPE THREADS)
  - \* ANSI B1.20 (NPTF)
  - \* BSPP, BSPT
  - \* 3000 WOG
- SW IN ACCORDANCE WITH ASME B16.11
- BW IN ACCORDANCE WITH ASME B16.25, SCH 40,80, 160, XXH
- FLANGED IN ACCORDANCE WITH: ASME/ANSI B16.5 CLASS 900#, DIN & JIS ALSO AVAILABLE.
- WORKING TEMPERATURE:
  - \* -29 to 120 °C
- BLOW-OUT PROOF STEM THAT IS BACKSEATED THROUGH THE VALVE BODY.
- DELRING SEATS
- PTFE PACKING
- SELF-ADJUSTING PACKING BY MEANS OF THE CAPS SCREWS AND A BELEVILLE WASHER. THIS ENABLES LONG SERVICE LIFE BEFORE MANUAL PACKING ADJUSTMEN IS MECESSARY.
- LOCKING DEVICE
- A MACHINED PAD IS DRILLED AND TAPPED FOR ACTUATION AS STANDARD
- RUGGED CAST HANDLE THAT INDICATES FLOW POSITION
- MEETS NACE MR 0175/ISO 15156
  - \* Materials for use in H2S containing environments in oil and gas production
- PRESSURE & TEMPERATURE:
  - \* ASME B16.34
- TEST & INSPECTION:
  - \* API 598
- FIRE TEST & CERTIFICATE TO API 607
- MTR ACC. EN 10254-3.1
- SAME AS T3 SERIES FROM CAMERON

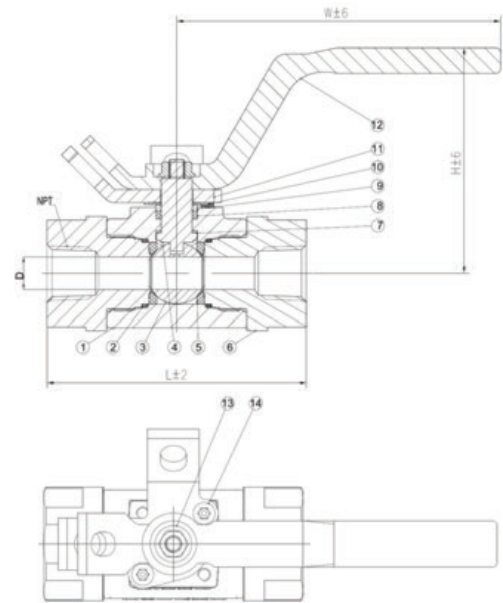


SIZE: 1/4" - 2"

CE APPROVED

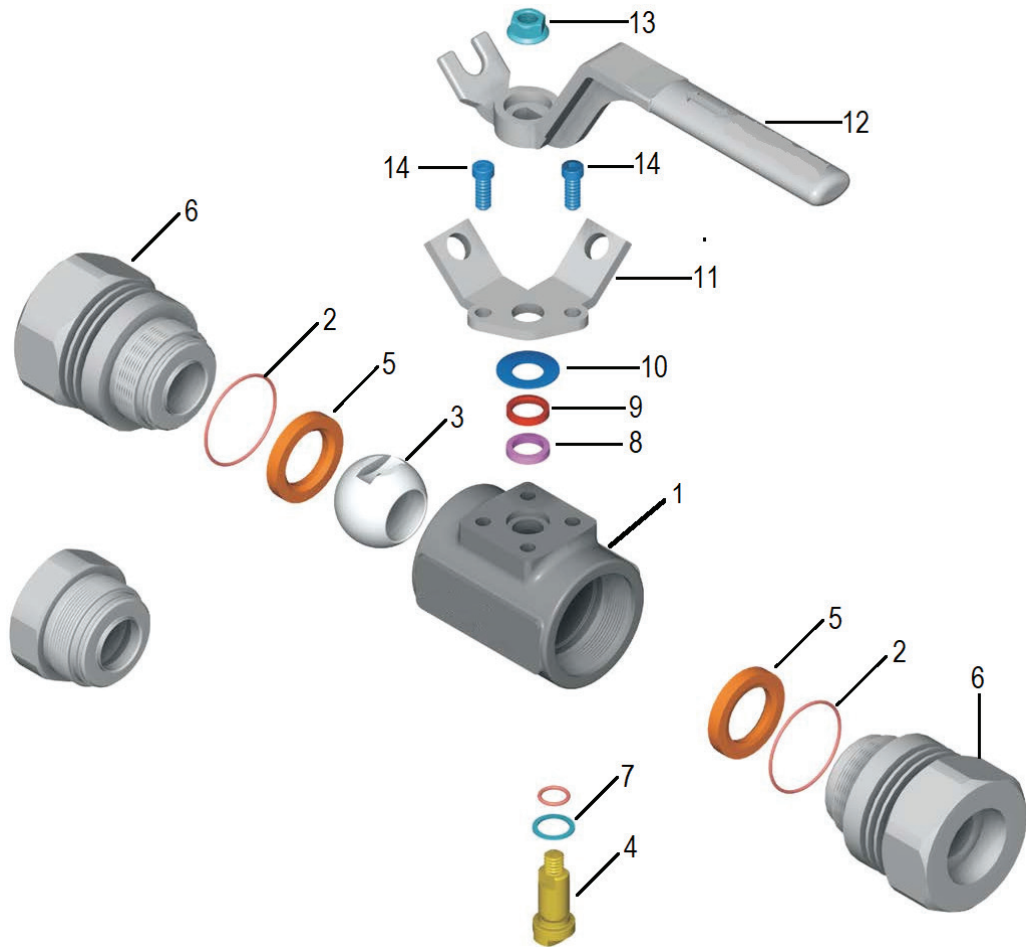
**HOW TO ORDER**

T33K -  -  -



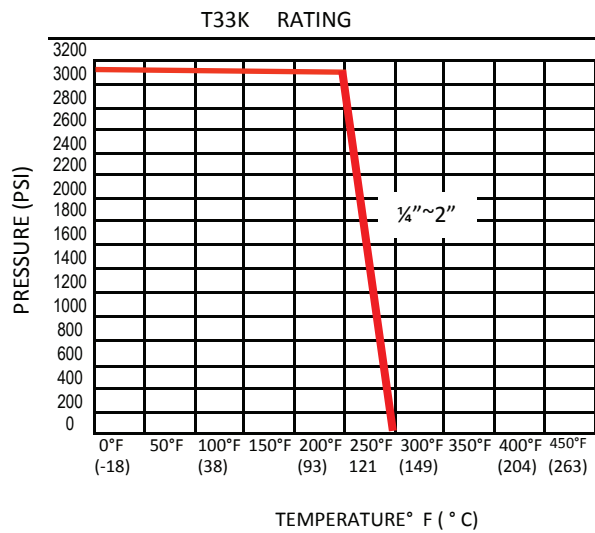
ITEM	PART	MATERIAL
1	BODY	ASTM A 105, A351-CF8M, ASTM A350 Gr. LF2
2	BODY O-RING	NBR
3	BALL	15% - R-PTFE
4	STEM	ASTM-A182 F316, ASTM A564 17-4PH
5	SEAT	DELRING
6	ENDS CAP	ASTM A 105, A351-CF8M, ASTM A350 Gr. LF2
7	THRUST-WASHER	CPTFE
8	PACKING	GRAPHITE
9	PACKING GLAND	SST
10	BELEVILLE WASHER	SST
11	GLAND FLANGE-LOCKING DEVICE	SST
12	HANDLE	SST
13	STEM NUT	A194 Gr 8M
14	GLAND FLANGE SCREWS	A193 Gr B8M





SIZE (NPT)	D	L	W	H	NPT	WEIGHT (Kg)	Torque Km
¼" FP	12.7	98.0	125.0	85.0	¼" - 18 NPT	1.3	
3/8" FP	12.7	98.0	125.0	85.0	3/8" - 18 NPT	1.2	
½" FP	12.7	98.0	125.0	85.0	1/2" - 14 NPT	1.2	16.27
¾" FP	22.0	108.0	171.0	110.0	3/4" - 14 NPT	2.2	
1" FP	25.0	133.0	171.0	110.0	1" - 11.5 NPT	3.1	
1-1/2" FP	38.0	159.0	279.0	140.0	1-1/2" - 11.5 NPT	8.1	101.69
2" RP	38.0	159.0	279.0	140.0	2" - 11.5 NPT	8.1	230.49

### PRESSURE - TEMPERATURE





*A Tradition of Quality*

*Our passion is to develop  
solutions for difficult situations in  
Industrial Applications, no matter  
how large or small the project.*

*"Serving the world, one project at a time"*

